



Our philosophy

Blueair believes in cleaner indoor air for everyone. Removing air impurities down to the tiniest particle requires a deep commitment to continuous innovation and a greener global environment. Our fresh air solutions are not only inventive, but extremely effective and ecofriendly. At Blueair we believe that clean air is a human right.

www.blueair.com

www.blueairaustralia.com.au

For sales and service in Australia & NZ, contact:

Air Cleaners Australia

air purifier & filter specialists



1300 301 951

AIR CLEANERS AUSTRALIA

104 Bell St

Heidelberg Heights VIC 3081

Ph: 1300 301 951

Fax: 03 9459 1906

e-mail: info@aircleanersaus.com.au

www.aircleanersaus.com.au

Blueair AB Sweden
Danderydsgatan 11,
SE-114 26
Stockholm, Sweden
Tel: +46-8-679 45 00,
Fax: +46-8-679 45 45
info@blueair.se

Blueair Inc. USA
17 N. State, Suite 1830,
Chicago, IL 60602
Tel: (888) 258-3247,
Fax: (312) 727-1153
info@blueair.com

Blueair Australia & NZ
Imported & distributed by
Air-Iononics Pty Ltd,
Tel: 61 3 9459 8969
Fax: 61 3 9459 1906
info@airiononics.com.au

Experience just
how **clean** your
indoor air can be





Life is a miracle
that needs clean
air



Airborne pollutants are constantly bombarding your home causing allergies, asthma, congested sinuses, headaches and tiredness. Research has shown that the air you breathe indoors can be 100 times more polluted than the air outside!

To dramatically reduce indoor pollution at home or work you need to continuously clean the air effectively at a high rate. A Blueair air purifier ensures the air you breathe is as clean and fresh as nature intended.



Near Silent Operation – Since air passes easily through Blueair filter media, the fan doesn't have to work as hard or as loud. Even the housing is designed with quiet operation in mind, replacing sound-sonant plastic with noise-muffling steel.

Low Energy Consumption – Blueair is among the first to earn the ENERGY STAR designation for air purifiers, a program developed in the United States and sponsored by the U.S. Environmental Protection Agency (EPA) and the U.S. Department of Energy. All models exceed ENERGY STAR's minimum energy efficiency guidelines.*

Award Winning Swedish Design – Its sleek contemporary look has earned Blueair one of the most prestigious design awards in Scandinavia, the Excellent Swedish Design Award.

Innovated with love in Sweden

Benefits and features



Zero Ozone Emission – Blueair systems use a very low electrical current to minimize ozone production and a sealed steel housing chamber to keep ozone contained. Testing shows the ozone concentration in our system's output air is actually lower than in the incoming air.

Easy to Use & Maintain – Plug it in and select the speed setting. Blueair works so quietly, at first you may find yourself wondering if it's turned on. Blueair filters require no weekly additives or filter washing and the grills and powder-coated steel exterior are easy to wipe clean.

Quality Steel Housing – The Blueair system housing is made of galvanized steel, rather than less durable plastic.

Performance leader

Why we deliver clean air faster than our competitors





Unmatched Clean Air Delivery Rate

CADR (Clean Air Delivery Rate) was developed by the Association of Home Appliance Manufacturers (AHAM) in the United States, to help consumers worldwide determine how well an air cleaner reduces airborne pollutants such as tobacco smoke, dust and pollen – by indicating the volume of filtered air delivered. The higher the CADR, the faster the unit filters the air.

CADR takes into account:

- the size of the particle removed
- what percentage of particles are removed
- the volume of air actually moving through the system

When the particle size and filter efficiency of any two air cleaners are the same (as they often are), CADR is the key to choosing the more effective system. To ensure accuracy and fairness, CADR testing is performed only through AHAM, an independent industry organization. CADR test results are recognized as accurate and impartial by the U.S. Environmental Protection Agency.

Air volume is often described as air exchange (the number of times the total volume of air in the room is processed by the unit within a given period of time). Some manufacturers substitute air exchange rates for CADR results, but they are not equivalent. CADR numbers give a much more precise report of an air purifier's performance.

The Blueair 600 Series have the highest CADR in the industry.

Superior technology

HEPASilent™ — Combining the best in electrostatic and mechanical filtration technology

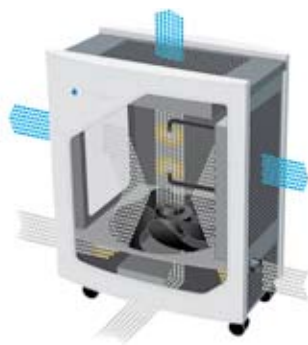
A revolutionary combination of advanced filter media and an encapsulated ion particle charging chamber ensures the Blueair air purification system achieves better results than either mechanical or electrostatic technology alone.

When running the units on the lowest setting, Blueair's HEPA-Silent™ filtration technology captures 99.97% of all particles down to 0.1 micron in size.

How it works

- 1** Air is drawn into the Blueair system via our ultra-quiet fan.
- 2** Airborne particles pass through an ion chamber and are electrically charged. This causes them to adhere effortlessly to our exclusive polypropylene filters.
- 3** Charged particles are removed in the gradient structured, progressive filter with the first layers capturing larger particles such as pollen and dust. As the polluted air is drawn further into the filter, even the smallest particles such as cigarette smoke* and exhaust are removed. Together, the encapsulated ion chamber and filtration process combine to create Blueair's patented HEPA-Silent™ technology — delivering maximum airflow with minimum noise.

* No air purifier or air cleaner can eliminate the hazardous contaminants, or stop the harmful effects of second hand smoke. The best defense is a smoke-free environment.

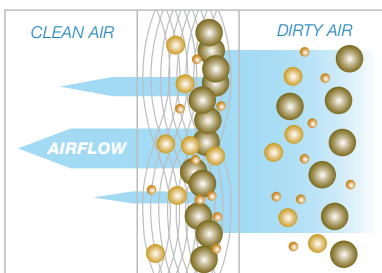


Blueair air purifiers use a combined technology of advanced filter media and an encapsulated ion particle charging chamber.

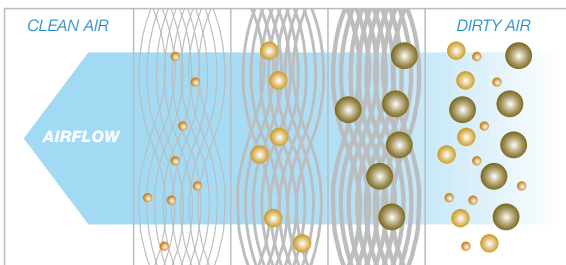
Gradient structured progressive filter

Blueair filters resemble having many filters in one. This is a result of the progressive structure of a Blueair filter with millions of ultra thin fibers in different sizes and layers. Our exclusive design allows Blueair filters to 'lock in' particles in different stages. Once captured, the particles are not re-released back into your environment, even when the filter is heavily loaded. The first layers capture larger particles like pollen and dust. Later filter layers capture smaller particles like bacteria and exhaust particles.

Our unique filter design resists clogging and allows filtration at peak performance levels with high efficiency and longer lasting high airflow. When the filter needs to be replaced (around every six months), just open the lid, take out the old filters and put the new ones in. No screws, hooks or tools are needed. And it is all done in under sixty seconds. An extra bonus is that Blueair filters require no weekly additives or filter washing.



Traditional HEPA filter: Clogging and restricted airflow



Blueair's gradient structured progressive HEPASilent filter: High efficiency and maximum airflow

Performance & Specifications*

Model

600 Series

Photo



Room size 698 sq. ft. (65 m²)

CADR (Clean Air Delivery Rate)

Smoke >450 (>765 m³/h)

Dust >400 (>680 m³/h)

Pollen >450 (>765 m³/h)

Air changes per hour (ACH)**

5 (698 sq.ft. room)
5 (65 m² room)

Airflow

90–490 cfm
150–830 m³/h

Size (HxWxD)

26 x 20 x 13 in.
660 x 500 x 340 mm

Product weight

35 lbs (16 kg)

Energy consumption (watts)

35 to 120

Noise level dB(A)

32–66

Electronic sensors, remote and on/off timer

Manual unit No

E-Series unit Yes

Filter replacement indicator

Yes

Speed control options

Manual unit 1-2-3-4

E-Series unit Auto-1-2-3

Casters

Yes

Air outlet

SurroundAir™
Top & Sides

Air inlet

Bottom & Sides

* Specifications based on US version models with 120 VAC, 60 Hz.

** Air changes per hour calculated on the recommended room size, assuming 8-foot (2.4 m) ceilings.



500 Series

400 Series

200 Series



580 sq.ft. (54 m²)

365 sq.ft. (34 m²)

240 sq.ft. (22 m²)

375 (638 m³/h)

240 (408 m³/h)

155 (263 m³/h)

375 (638 m³/h)

240 (408 m³/h)

155 (263 m³/h)

375 (638 m³/h)

240 (408 m³/h)

155 (263 m³/h)

5 (580 sq.ft. room)
5 (54 m² room)

5 (365 sq.ft. room)
5 (34 m² room)

5 (240 sq.ft. room)
5 (22 m² room)

90–415 cfm
150–705 m³/h

75–280 cfm
130–475 m³/h

60–150 cfm
100–255 m³/h

26 x 20 x 13 in.
660 x 500 x 340 mm

23 x 20 x 11 in.
590 x 500 x 275 mm

21 x 17 x 10 in.
533 x 432 x 241 mm

35 lbs (16 kg)

33 lbs (15 kg)

25 lbs (11 kg)

35 to 120

35 to 80

20 to 80

32–66

32–52

32–56

No

No

No

Yes

Yes

Yes

Yes

Yes

Yes

1-2-3-4

1-2-3-4

1-2-3

Auto-1-2-3

Auto-1-2-3

Auto-1-2-3

Yes

No – Handles

No – Handles

SurroundAir™
Top & Sides

Side

Top

Bottom & Sides

Side

Back

For smaller rooms, the air changes per hour will increase.